

RAB35

Catalog Number: 26033

Gene Symbol: RAB35

Description: Anti-Rab35 Mouse Monoclonal Antibody

Background: The Rab family of GTPases regulates eukaryotic vesicular membrane traffic. Rab35 is with both plasma membrane and endosomal localization and has been implicated in diverse processes that include T-cell receptor recycling, oocyte yolk protein recycling and cytokinesis. Rab35 regulates neurite outgrowth in neuronal-like cells and can induce protrusions.

Immunogen: Recombinant full length protein of Rab35.

Tested Applications: ELISA, WB, IHC, IP

Recommended Dilutions:

ELISA	1:100-1:5000
WB	1:100-1:2000
IHC	1:100-1:1000

Concentration: 1 mg/ml

Host: Mouse

Clonality: Monoclonal

Isotype: IgG

Purity: Purified from ascites

Format: Liquid

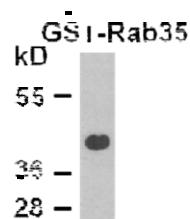
Preservative: No

Constituents: PBS (without Mg^{2+} and Ca^{2+}), pH7.4, 150 mM NaCl, 50% glycerol

Species Reactivity: Rab35 antibody recognizes Rab35 of vertebrates.

Storage Conditions: Store at $-20^{\circ}C$. Avoid freeze / thaw cycles

Western blot:



WB:anti-Rab35 mAb

Western blot analysis of recombinant GST-Rab35 proteins.

FOR RESEARCH USE ONLY. NOT FOR DIAGNOSTIC APPLICATIONS